

# Primacy

Evolis introduces **Primacy**, the printer that will set new records in rapidity, power and high performances.

Easy-to-use, **Primacy** supports single or dual-sided printing, and, just like other printers from Evolis, offers superior quality, at an affordable price point.



## THE ULTIMATE CARD PRINTER!

**Primacy is a high-end printer that is easy-to-use, flexible and fast. When loaded with the Evolis cutting-edge encoding technologies, Primacy turns into the ideal solution to issue cards.**

Primacy supports any requirement in card printing and encoding, in medium to large runs. This is the perfect option to deliver transportation passes, payment cards, identification badges, as well as multi-feature cards.



### POWERFUL

Primacy delivers cards in runs, thanks to 100-card capacity input and output hoppers. These modules are conveniently located at the front of the printer and can be accessed easily and monitored at a glance. Primacy is the very first printer in its category to offer this level of performances through such a compact size and footprint. The printer also ensures top-notch printing quality at an unmatched printing speed.

### ECO-FRIENDLY AND SILENT

Primacy is an eco-designed printer. The energy consumption is on average 5 times lower than printers from the previous generation. The printer benefits from the ENERGY STAR certification and is compliant with the ErP directive. Primacy operates at a low 48 db sound level and, therefore, can be seamlessly deployed into any working environment.

### EASY-TO-USE

Shipped with the Evolis Premium Suite® software solution, Primacy makes self-adjustments when in operation. Users benefit from screen-based alert pop-ups, while 24/7 online help is available just a click away. Cards can be simply loaded at the printer's front side. Ribbons are available in a cassette system that can easily be dropped into the printer. Each ribbon is automatically set and identified.

### RELIABLE

Primacy benefits from the expertise and proven quality standards of Evolis. This enables optimized operations and perfect results. Evolis' strong commitment to quality is legendary, and is echoed by a 3-year warranty.

### PRIMACY, POWERFUL AND MODULAR

Primacy personalizes color cards in a record time. Up to 210 cards per hour for one side, and 140 cards per hour for dual-sided printing. The same machine can print on either one or both sides, and the dual-sided option can also be activated on-site. This flexible printer can also be fitted with additional options at any time, when magnetic and contact/contactless encoding are required.

# Primacy

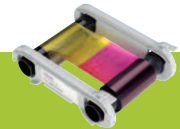
## USER-FRIENDLY

- Easy access to all features
- 100-card feeder and hopper conveniently available at the front
- Monitoring of remaining cards at a glance
- Reject tray located at the back (30 cards)
- Supplied with Evolis Premium Suite®, for automated configuration
- A lightweight printer: only 4 kg (less than 9 lbs)



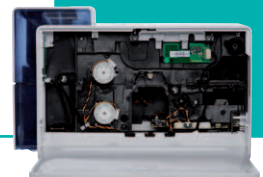
## FIRST-CLASS PERFORMANCES

- Increased efficiency with an autonomy of 100 cards
- Color ribbon capacity (YMCKO): 250 cards
- Full flexibility: single/dual-sided, and encoding options
- Fast: 850 cards per hour in monochrome



## HIGHLY MODULAR

- Configuration as per your requirements: single or dual-sided
- Encoders can be combined for advanced personalization



### GENERAL FEATURES

- Single-sided or dual-sided printing module, edge to edge printing
- Color dye sublimation, monochrome thermal transfer
- 300 dpi print head (11.8 dots/mm)
- 16MB Memory (RAM)

### PRINTING PERFORMANCES

- Single side:
  - Color (YMCKO): 190 - 210 cards /hour
  - Monochrome: 600 - 850 cards /hour
- Dual side (YMCKO-K): 140 cards /hour

### CARD MANAGEMENT AND SPECIFICATIONS

- Input hopper capacity: 100 cards (0.76 mm - 30 mil)
- Output hopper capacity: 100 cards (0.76 mm - 30 mil)
- Reject tray: 30 cards (0.76 mm - 30 mil)
- Card thickness: 0.25 to 1.25 mm (10 to 50 mil), gauge adjustment
- Types of cards: All PVC, Composite PVC cards, PET, ABS<sup>(1)</sup> and special varnished<sup>(1)</sup> cards
- Card format ISO CR80 - ISO 7810 (53.98mm x 85.60 mm)

### EVOLIS HIGH TRUST® RIBBONS

To maximize the quality and durability of printed cards, the lifespan of the print head and the overall printer reliability, use Evolis High Trust® ribbons.

- Automatic identification and setting
- Delivered in a drop-in cassette for easy handling
- Ribbon saver for monochrome printing
- Ribbon capacity:
  - YMCKO: 250 prints / roll
  - YMCKO-K: 200 prints / roll
  - ½ YMCKO: 400 prints / roll
  - KO: 600 prints / roll
  - Monochrome ribbon: 1000 prints / roll<sup>(2)</sup>
  - Hologram varnish: 400 prints / roll

### INTERFACES

- USB 1.1 (compatible 2.0)
- Ethernet TCP-IP 10BaseT, 100BaseT (Traffic Led)

### DISPLAY

- Printer LEDs
- Graphical notifications<sup>(3)</sup> from the printer: Empty input hopper alert, cleaning alerts, empty/low level ribbon alert

### SOFTWARE

- Delivered with Evolis Premium Suite® for Windows:
  - Printer driver
  - Evolis Print Center for printer administration and settings
  - Printer Manager for bi-directional graphical notification<sup>(4)</sup>
  - Compatible with Windows: XP SP3; Vista 32/64, W7 32/64<sup>(4)</sup>
- Delivered with eMedia CS Card Designer, Standard Edition, unlimited version (compatible with Windows™ 7 and Vista)
- Delivered with a driver for Mac OS X (from 10.5 onwards)
- Other OS: Linux upon request

### WARRANTY

- 3-year warranty (printer and printhead)<sup>(5)</sup>

### SIZE AND WEIGHT

- Size: Height 247mm (9.72") x length 205mm (8.07") x width 381 mm (14.99")
- With reject tray: Height 247mm (9.72") x length 205mm (8.07") x width 481 mm (18.93")
- Weight: 4.02 kg (8.86 lbs)

### SOUND (EVALUATED ACCORDING TO THE ISO 7779 STANDARD)

- Sound pressure in assistant positions LpAm (colour mode YMCKO)
  - When operating: 48dB (A)
  - In sleep mode: background noise level

### SAFETY

- Support for Kensington® security lock
- Data encryption for magnetic encoding

### PACKAGING CONTENT

- Printer
- CD-ROM with printer drivers, user manuals, and eMedia CS
- Cleaning kit
- USB cable
- Reject tray
- Power supply and cord

### OPTIONS & ACCESSORIES

- Colors available: Fire Red & Brilliant Blue
- Upgrade kit for dual-sided printing
- Encoding options can be combined. Upgrade can be carried out on-site, by adding new modules:
  - Magnetic stripe encoder, smart contact station, smart encoding unit, contactless encoding unit

### ENVIRONMENTAL FEATURES, CERTIFICATIONS AND STATEMENT OF COMPLIANCE

- Standby modes & reduced energy consumption
- CE, FCC, IEC, VCCI, CCC<sup>(6)</sup>, KCC<sup>(6)</sup>
- ErP 2009/125/CE, ENERGY STAR, ROHS

### POWER

- Power supply: 100-240 Volts AC, 50-60 Hz, 1.8A
- Printer: 24 Volts DC, 3 A

### ENVIRONMENT

- Min/max operating temperature: 15° / 30 °C (59° / 86 °F)
- Humidity: 20% to 65% non-condensing
- Min/max storage temperature: -5° / +70 °C (23° / 158 °F)
- Storage humidity: 20% to 70% non-condensing
- Operating ventilation: open air

### RESIDENT FONTS

- Arial 100, Arial bold 100
- Barcode: Code 39, Code 128, EAN 13, 2/5 interleaved

<sup>1</sup> Under specific conditions / <sup>2</sup> Depends on the Windows™ version / <sup>3</sup> Requires the .net 4.0 client profile version / <sup>4</sup> For older Windows versions, you can use the printer through the driver only (no Print Center, no Printer Manager) / <sup>5</sup> Warranty subject to observance of specific conditions and use of Evolis High Trust® ribbons / <sup>6</sup> Expected in December 2012

## EUROPE - MIDDLE-EAST - AFRICA

Evolis Card Printer - 14 avenue de la Fontaine - ZI Angers - 49070 Beaucauzé - France  
T +33 (0) 241 367 606 - F +33 (0) 241 367 612 - info@evolis.com

**AMERICAS** - Evolis Inc. - Fort Lauderdale - evolisin@evolis.com

**ASIA-PACIFIC** - Evolis Asia Pte Ltd - Singapore - evolisasia@evolis.com

**CHINA** - infochina@evolis.com

**JAPAN** - infojapan@evolis.com



100% recycled paper

www.evolis.com



**evolis**  
card printers